

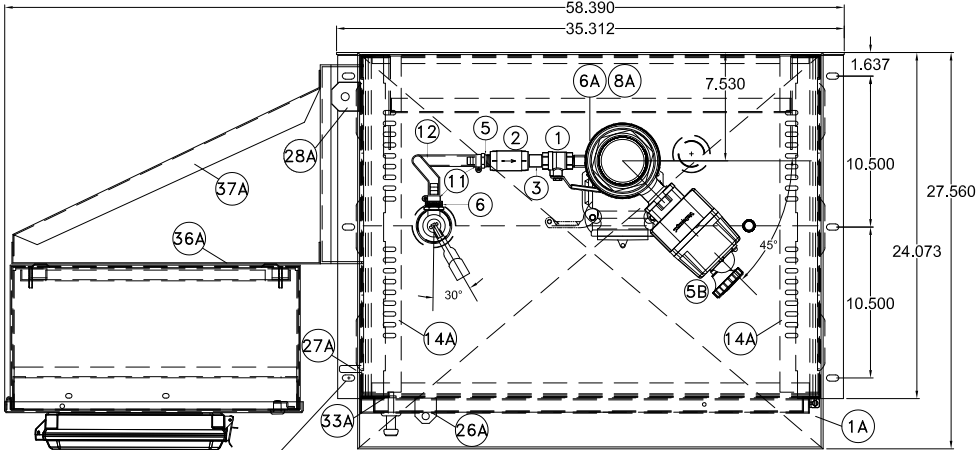
AFP-3 AUTOMATIC FUEL PORT 3" (1-TANK SYSTEM)

\*\*CUSTOMER/PRODUCTION DRAWING\*\*

- NOTES
- 1) ALL DIMENSIONS ±.125
- 2) DUE TO SYSTEM COMPLEXITY SOME COMPONENTS MAY NOT BE VISIBLE IN ALL VIEWS
- 3) CONSTRUCTION WELDED 14 GA. H.R.S.
- 4) CABINET COLOR: **WHITE** DOORS COLOR: **BLUE**
- 5) APPROXIMATE WEIGHT: TBDlbs.

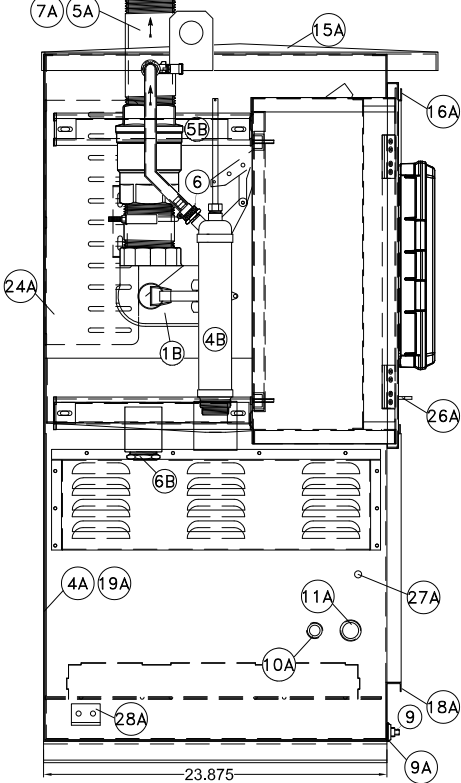
BUILT W/ FABRICATED CABINET (NON-STOCK) & STOCK AFC-1 (PN. 50001628)

- ☒ **STD. FILLING SYSTEM DRAWING**
- ☐ **NON-STD. FILLING SYSTEM DRAWING**

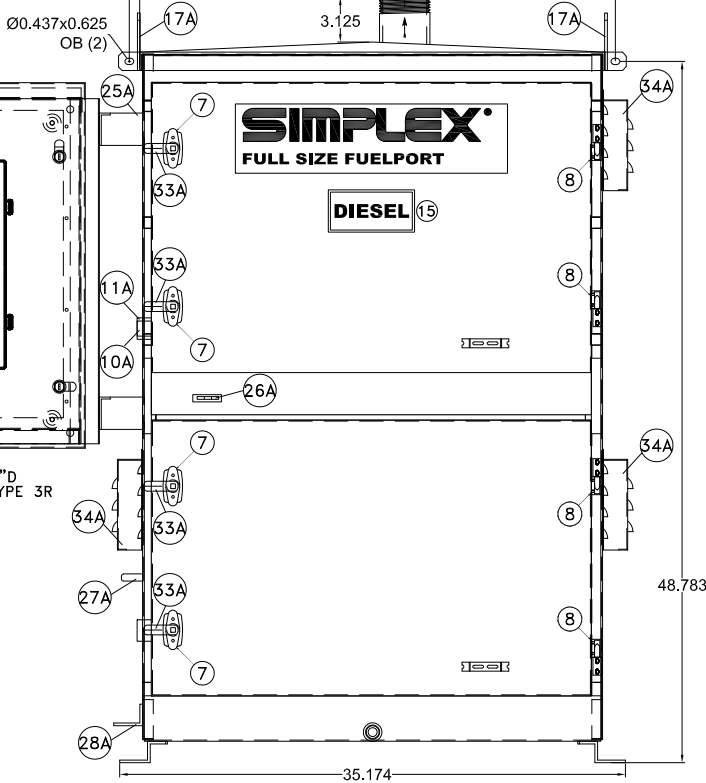


TOP VIEW LESS LOUVER COVERS

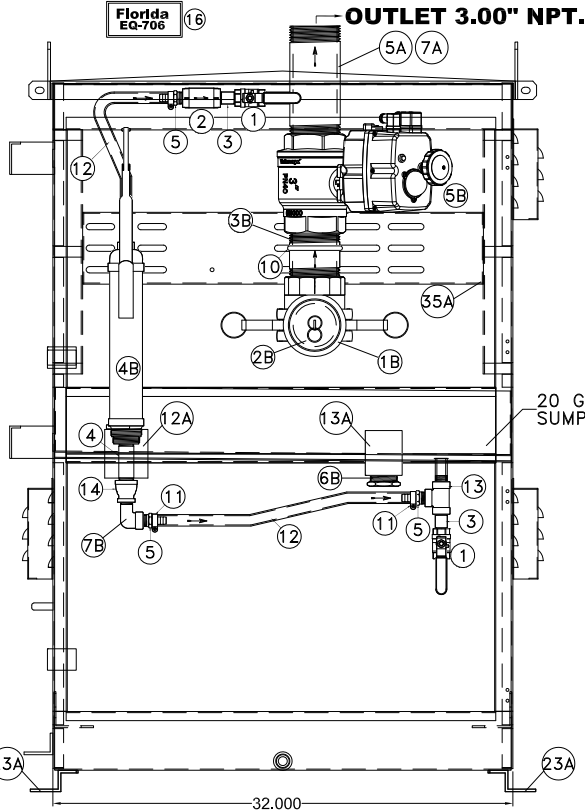
OUTLET 3.00" NPT.



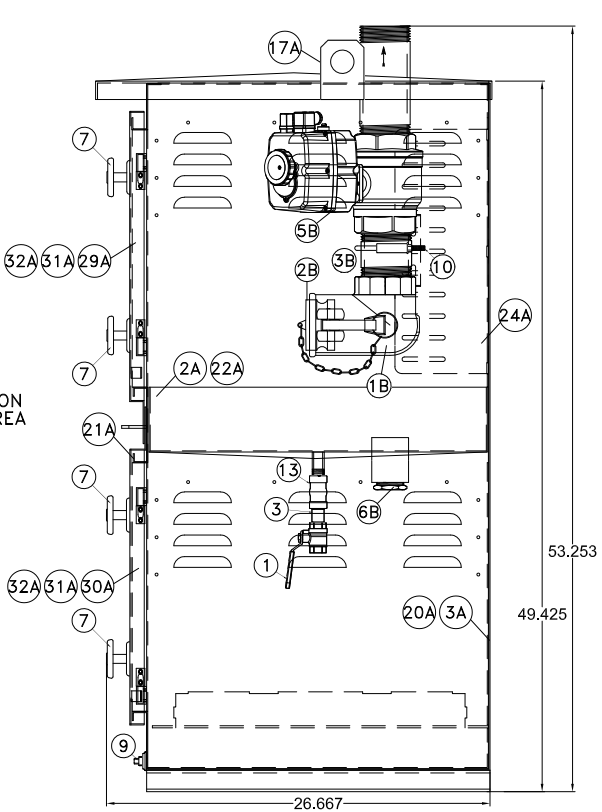
LEFT SIDE VIEW LESS DOORS



FRONT VIEW



FRONT VIEW LESS DOORS & CONTROLLER



RIGHT SIDE VIEW LESS LOUVER COVERS

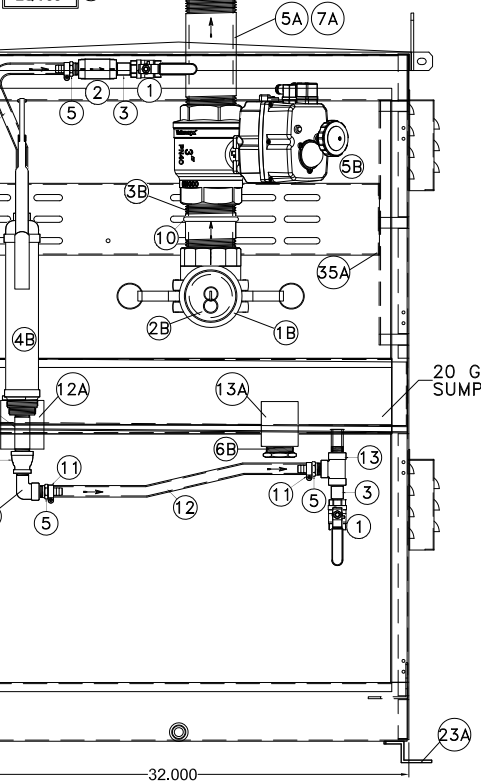
REFERENCE ASSEMBLY (FOR SIMPLEX USE ONLY)			
ITEM	DESCRIPTION	PART NUMBER	QTY.
1A	FULL SIZE FILL BASE WELDMENT ASSEMBLY	ACD-00056396D	1
2A	FULL SIZE FILL BASE CONTAINMENT SINK WELDMENT	ACD-00056379B	1
3A	FULL SIZE FILL BASE RIGHT SIDE WELDMENT	ACD-00056398B	1
4A	FULL SIZE FILL BASE LEFT SIDE WELDMENT	ACD-00056399C	1
5A	CFB 3.00"x8.00" NIPPLE ASSEMBLY	ACD-00059598A	1
6A	CFB 0.50"x4.00" NIPPLE ASSEMBLY	ACD-00053538A	1

FUEL ASSEMBLY PARTS (FLOOR STOCK)			
ITEM	DESCRIPTION	PART NUMBER	QTY.
1	BV1 0.50" NPT. MANUAL BALL VALVE, FULL PORT, BRASS/BRONZE BODY	22918050	2
2	CV 0.50" NPT. CHECK VALVE, SPRING TYPE, BRONZE W/ VITON O-RING	22923105	1
3	NP2 0.50"x1.50" NPT. NIPPLE, SCH. 40, 304 STAINLESS STEEL, TBE	22514048	2
4	NP3 0.75"x3.00" NPT. NIPPLE, SCH. 40, 304 STAINLESS STEEL, TBE	60000102	1
5	HB1 HOSE BARB 0.50" ID BARB x 0.50" NPT. MALE THREADS, BRASS	60000159	3
6	HB2 HOSE BARB 0.50" ID BARB x GHT FEMALE THREADS, BRASS	22743000	1
7	DLN DOOR LATCH, NON-LOCKING T-HANDLE, BLACK W/ GASKET	15454500	4
8	DH DOOR HINGE 2-1/4"x19/32" #10 W/ UL GREEN SEALING WASHERS	15372001	4
		20715025	8
9	SP SUMP PLUG, 0.375" NPT. HEX HEAD, 316 STAINLESS STEEL	22905600	1
10	PC PIPE CLAMP U-BOLT, STEEL FOR 3.00" PIPE, 3/8"-16 THREAD	19500001	1
11	HC HOSE CLAMP W/ STAINLESS STEEL BAND	22203000	4
12	H PCV CLEAR BRAIDED HOSE, 0.50" I.D. x 0.75" O.D.	22730001	-
13	T1 0.50" NPT. TEE, 150#, 304 STAINLESS STEEL	22533050	1
14	RB1 0.75"x0.50" NPT. REDUCER BELL, 150#, 304 STAINLESS STEEL	60000112	1

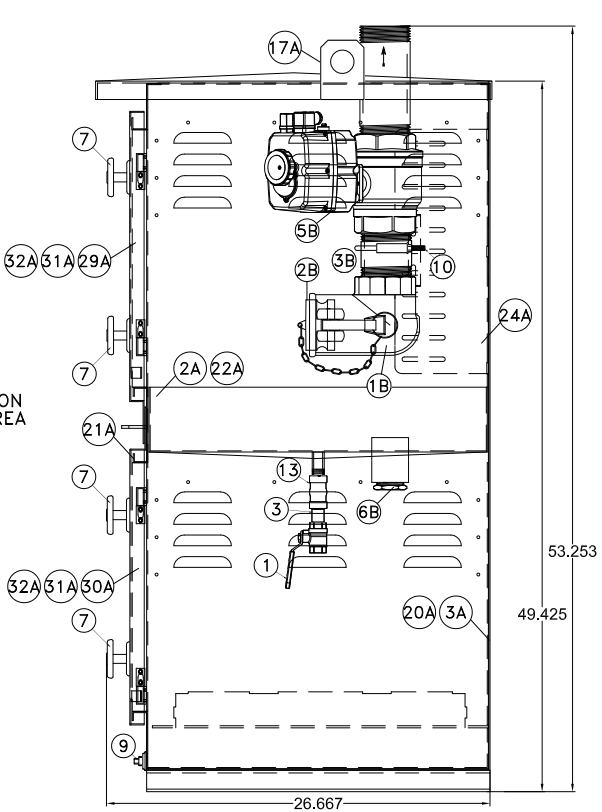
AVAILABLE PARTS (REFERENCE SALES ORDER FOR OPTIONS)

FUEL ASSEMBLY PARTS (FLOOR STOCK)					
ITEM	DESCRIPTION		PART NUMBER	QTY.	OPTION
DL	DIESEL LABEL, 6"x3"H, GREEN/WHITE		24138005	1	FSOP-041
EQ	FLORIDA EQ-706 AFC/SPILL CONTAINMENT LABEL, 5.25"Lx2.5"H, WHITE/BLACK		24055214	1	FSOP-044

OUTLET 3.00" NPT.



FRONT VIEW LESS DOORS & CONTROLLER



RIGHT SIDE VIEW LESS LOUVER COVERS

FUEL ASSEMBLY PARTS (FS Assy-OPERATION 10)			
ITEM	DESCRIPTION	PART NUMBER	QTY.
1B	AC 3.00" ANGLE CHECK ELBOW COUPLER, FEMALE NPT. THREAD x COUPLER, ALUMINUM BODY W/ VITON SEAL, PART G	22919001	1
2B	DP1 DUST PLUG ADAPTER FOR 3.00" COUPLER, ALUMINUM, PART W	22440904	1
3B	N1 3.00"x4.00" NPT. NIPPLE, SCH. 40, 304 STAINLESS STEEL, TBE	60000196	1
4B	MHP MANUAL HAND PUMP, STEEL BODY W/ ALUMINUM HEAD & BASE 1-GAL. PER 9 STROKES DELIVERY RATE	24740000	1
5B	MBV 3.00" NPT. MOTORIZED BALL VALVE, BRASS BODY, FULL PORT, 115VAC ACTUATOR W/ POSITION INDICATOR & MANUAL OVERRIDE W/ 16FT ISO PLUG & SUB-MICRO PLUG CABLES	22919280 25550075 25550080	1 1 1
6B	P1 1.50" NPT. PLUG, HEX HEAD, 150#, 304 STAINLESS STEEL	60000203	1
7B	E1 0.50" NPT. STREET ELBOW, 90 DEGREE, 150#, 304 STAINLESS STEEL	22463360	1

FABRICATED PARTS (Weld-OPERATION 10)			
ITEM	DESCRIPTION	PART NUMBER	QTY.
7A	3.00"x8.00" NPT. NIPPLE, TBE, SCH. 40, 150#, BLK.	22517004	1
8A	0.50"x4.00" NPT. NIPPLE, TBE, SCH. 40, 150#, BLK.	22513100	1
9A	0.375" NPT. WELD FLANGE, BLK, FLAT TYPE FOR SUMP DRAIN	22602000	1
10A	0.50" NPT. CONDUIT COUPLING, 150#, BLK.	22442000	2
11A	0.75" NPT. CONDUIT COUPLING, 150#, BLK.	22442100	2
12A	2.00" NPT. PIPE COUPLING, 3000#, BLK. TAPERED ENDS	22445055	1
13A	1.50" NPT. PIPE COUPLING, 3000#, BLK. TAPERED ENDS	22445053	1
14A	FULL SIZE FILL BASE MOTOR MOUNTING CHANNEL	ACD-00056383B	2
15A	FULL SIZE FILL BASE TOP	ACD-00056372C	1
16A	FULL SIZE FILL BASE TOP HEADER	ACD-00056373B	1
17A	FULL SIZE FILL BASE LIFT EYE	ACD-00056374A	2
18A	FULL SIZE FILL BASE WRAPPER	ACD-00056371B	1
19A	FULL SIZE FILL BASE LEFT SIDE	ACD-00056376D	1
20A	FULL SIZE FILL BASE RIGHT SIDE	ACD-00056377C	1
21A	FULL SIZE FILL BASE DIVIDER SILL	ACD-00056378B	1

22A	FULL SIZE FILL BASE CONTAINMENT SINK	ACD-00056380B	1
23A	FULL SIZE FILL BASE FOOT	ACD-00056375B	2
24A	FULL SIZE FILL BASE PLUMBING SUPPORT ANGLE	ACD-00056382A	2
25A	FULL SIZE FILL BASE CONTROLLER MOUNTING CHANNEL	ACD-00056395C	2
26A	COMPACT FILL BASE PADLOCK SLOT/TAB, 7GA. H.R.S.	ACD-00053547A	1
27A	COMPACT FILL BASE STAINLESS STEEL GROUND STUD	ACD-00053548A	1
28A	FULL SIZE FILL BASE STAINLESS STEEL GROUND LUG	ACD-00056381A	1
29A	FULL SIZE FILL BASE TOP DOOR	ACD-00056384B	1
30A	FULL SIZE FILL BASE BOTTOM DOOR	ACD-00056386B	1
31A	FULL SIZE FILL BASE DOOR JIG	ACD-00056385A	2
32A	FULL SIZE FILL BASE DOOR STAY MOUNTING BRACKET	ACD-00056394A	2
33A	COMPACT FILL BASE DOOR PAWL, 2.375", GALVANIZED	ACD-00053551A	4
34A	FULL SIZE FILL BASE LOUVER COVER	ACD-00056390A	3
35A	FULL SIZE FILL BASE PLUMBING SUPPORT CHANNEL	ACD-00056391C	1
36A	FULL SIZE FILL BASE CONTROLLER SUPPORT PANEL	ACD-00056388B	1
37A	FULL SIZE FILL BASE CONTROLLER SUPPORT BRACE	ACD-00056389A	2

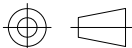
**SIMPLEX**

SIMPLEX, INC.  
5300 RISING MOON ROAD  
SPRINGFIELD, ILLINOIS 62711-6228

THE INFORMATION HEREON IS THE  
PROPERTY OF SIMPLEX, INC. AND/OR  
ITS SUBSIDIARIES. WITHOUT WRITTEN  
PERMISSION ANY COPYING,  
TRANSMITTAL TO OTHERS AND USE  
EXCEPT THAT FOR WHICH IT IS  
LOANED IS PROHIBITED.

© 2019 SIMPLEX, INC.  
ALL RIGHTS RESERVED

THIRD ANGLE PROJECTION



REVISIONS & UPDATES

ORIGINAL DESIGN

12/31/2019

A

REV

DATE

DESCRIPTION

AA

AA

1:13.1533

ANSI B

NA

DESCRIPTION  
FULL SIZE AUTO FUEL PORT  
AFP-3 STANDARD  
PICTORIAL

Approved 12/31/2019

DRAWING NUMBER

ACD-00066007

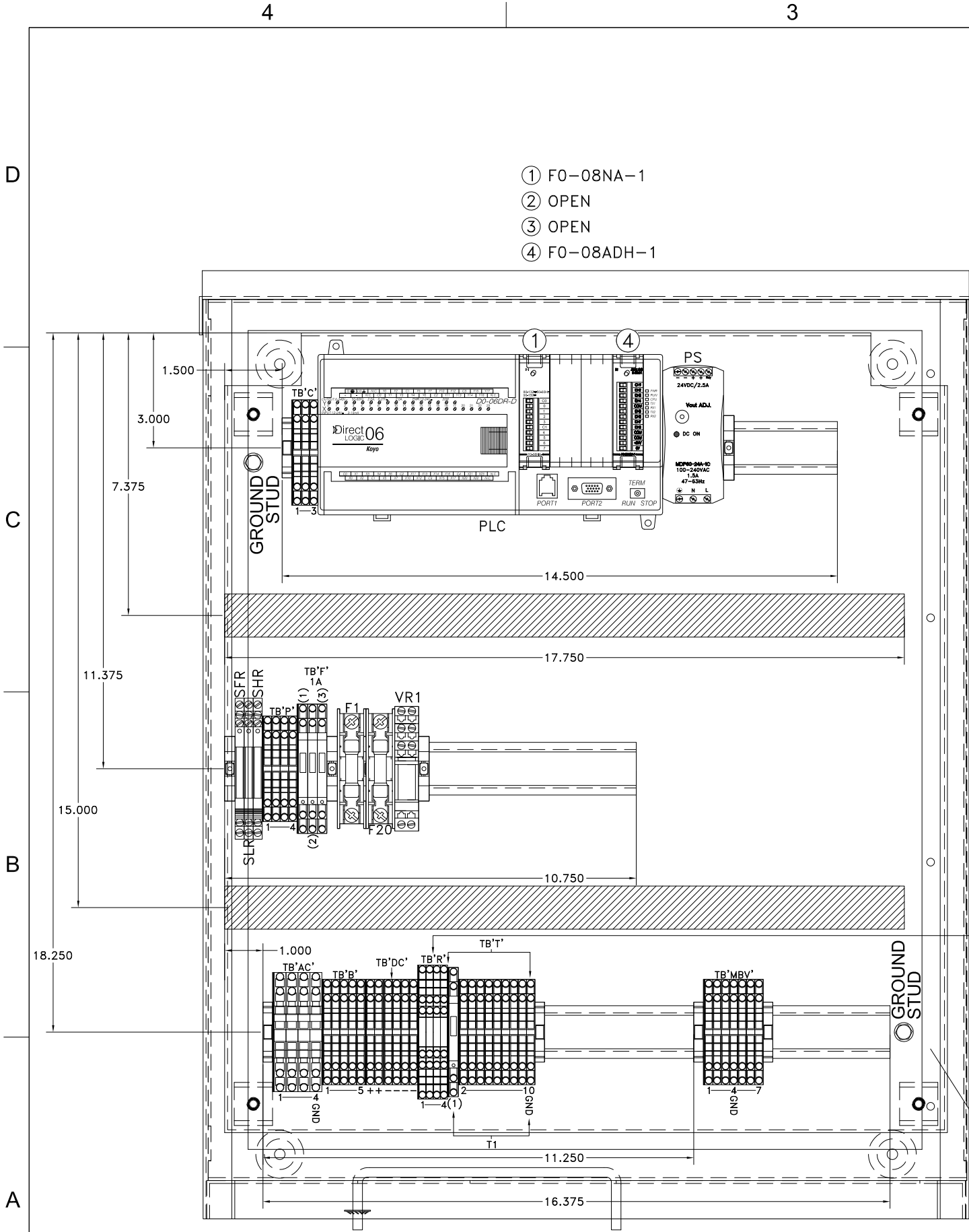
SHEET NUMBER

1/1

REVISION

A

## C



SUBPANEL PARTS (SubAssy-OPERATION 10)			
ITEM	DESCRIPTION	PART NUMBER	QTY.
PLC	PLC, DL06, 12-24VDC, (1) SERIAL COMM., 20DC INPUTS, 16 RELAY OUTPUTS	24955105	1
PS	POWER SUPPLY, 85-264VAC, 24V, 60W, 50/60HZ. SLIM LINE	25457900A	1
SFR,SLR SHR	RELAY TERMINAL BLOCK STYLE, 1-POLE, 24VDC	24827008	3
[F1,20]	FUSE BLOCK, 1-POLE, 30A, 600VAC, LARGE STYLE	15011100	2
[VR1]	RELAY SOCKET W/ SMALL SWITCHING RELAY, 24VDC, 1-POLE	24827046	1
[PLC]	PLC BACK-UP BATTERY, 3VDC LITHIUM, CR2354	24956000	1

WIRING PARTS (FS SW-OPERATION 20)			
ITEM	DESCRIPTION	PART NUMBER	QTY.
[HMI]	OPERATOR INTERFACE CABLE, PLC PORT-1 TO C-MORE MICRO	24955052	1
[PLC]	PLC COMMUNICATION CABLE, PORT-2 TO RS-485 TERM. 4FT.	24955085	1
[PLC]	PLC INPUT MODULE, 8PT, 115VAC (F0-08NA-1)	24955025	1
[PLC]	PLC INPUT MODULE, (8)-ANALOG INPUTS (F0-08ADH-1)	24955026	1
SFR,SLR SHR	W-2AY SMALL RELAY JUMPER, PUSH-IN TYPE	25678556	1
F1,F20	FUSE, 2.0 AMP, 600VAC, TIME-DELAY, LARGE STYLE	14012000	2

SUBPANEL PARTS (FLOOR STOCK)			
ITEM	DESCRIPTION	PART NUMBER	QTY.
TB-AC	TERMINAL BLOCK, 4-WIRE, 30A, 600V, GRAY	25678558	3
	TERMINAL BLOCK, 4-WIRE, 30A, 600V, GREEN, GROUND	25678559	1
[GND]	TERMINAL BLOCK, 4-WIRE END PLATE, 30A, ORANGE	25678570	1
TB-C,P,B, T,DC,MBV	TERMINAL BLOCK, 4-WIRE, 20A, 600V, GRAY	25678536	32
	TERMINAL BLOCK, 4-WIRE, 20A, 600V, GREEN, GROUND	25678537	2
[GND]	TERMINAL BLOCK, 4-WIRE END PLATE, 20A, ORANGE	25678538	7
TB-F T(1)	TERMINAL BLOCK, 4-WIRE, 20A, 600V, GRAY, FUSE HOLDER STYLE	25678544	4
	FUSE HOLDER STYLE TERMINAL BLOCK END PLATE	25678545	2
TB-R	TERMINAL BLOCK, TRIPLE DECK, 24A, BLUE	25678550	4
	TERMINAL BLOCK, TRIPLE DECK END PLATE, ORANGE	25678551	1

WIRING PARTS (FLOOR STOCK)			
ITEM	DESCRIPTION	PART NUMBER	QTY.
TB-F TB-T	FUSE, 1.0 AMP, 250VAC, FAST ACTING, SMALL STYLE	14001001	4

TB-R 1-4 TRIPLE DECK TERMINAL DETAIL:  
X.1 IS CLOSEST DECK TO SUBPANEL  
X.2 IS MIDDLE DECK  
X.3 IS FURTHEST FROM SUBPANEL

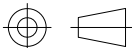
SUB

**SIMPLEX**

SIMPLEX, INC.  
5300 RISING MOON ROAD  
SPRINGFIELD, ILLINOIS 62711-6228

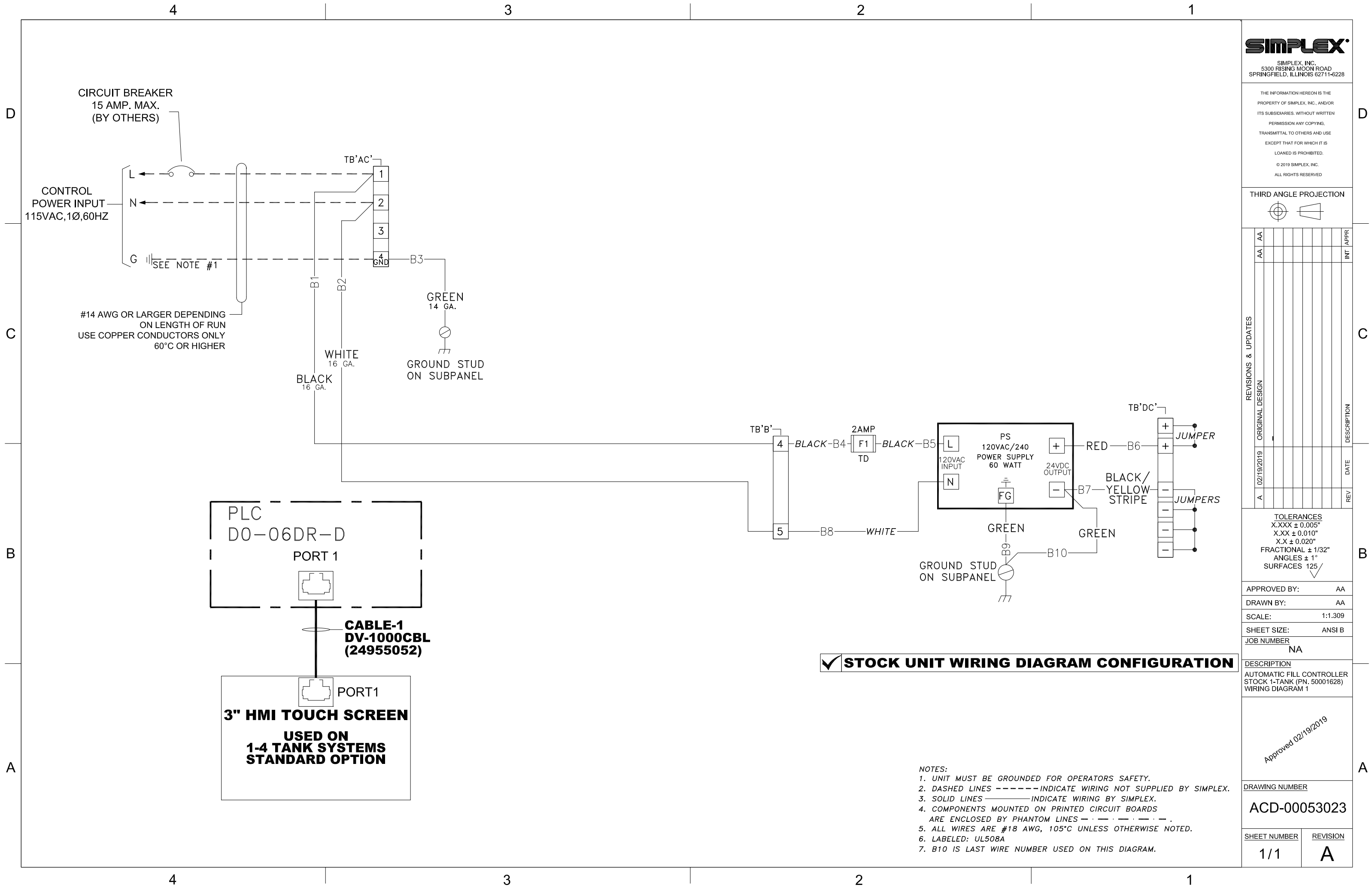
THE INFORMATION HEREON IS THE  
PROPERTY OF SIMPLEX, INC., AND/OR  
ITS SUBSIDIARIES. WITHOUT WRITTEN  
PERMISSION ANY COPYING,  
TRANSMITTAL TO OTHERS AND USE  
EXCEPT THAT FOR WHICH IT IS  
LOANED IS PROHIBITED.  
© 2019 SIMPLEX, INC.  
ALL RIGHTS RESERVED

THIRD ANGLE PROJECTION

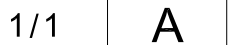
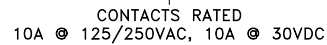


REVISIONS & UPDATES		TOLERANCES	
AA	AA	X.XXX ± 0.005"	AA
AA	AA	X.XX ± 0.010"	AA
AA	AA	X.X ± 0.020"	AA
AA	AA	FRACTIONAL ± 1/32"	AA
AA	AA	ANGLES ± 1°	AA
AA	AA	SURFACES 125	AA
AA	AA	APPROVED BY:	AA
AA	AA	DRAWN BY:	AA
AA	AA	SCALE:	1:3.3231
AA	AA	SHEET SIZE:	ANSI B
AA	AA	JOB NUMBER	NA
AA	AA	DESCRIPTION	AUTOMATIC FILL CONTROLLER STOCK 1-TANK (PN. 50001628) SUBPANEL LAYOUT
AA	AA	DRAWING NUMBER	ACD-00053021
AA	AA	SHEET NUMBER	1/1
AA	AA	REVISION	B

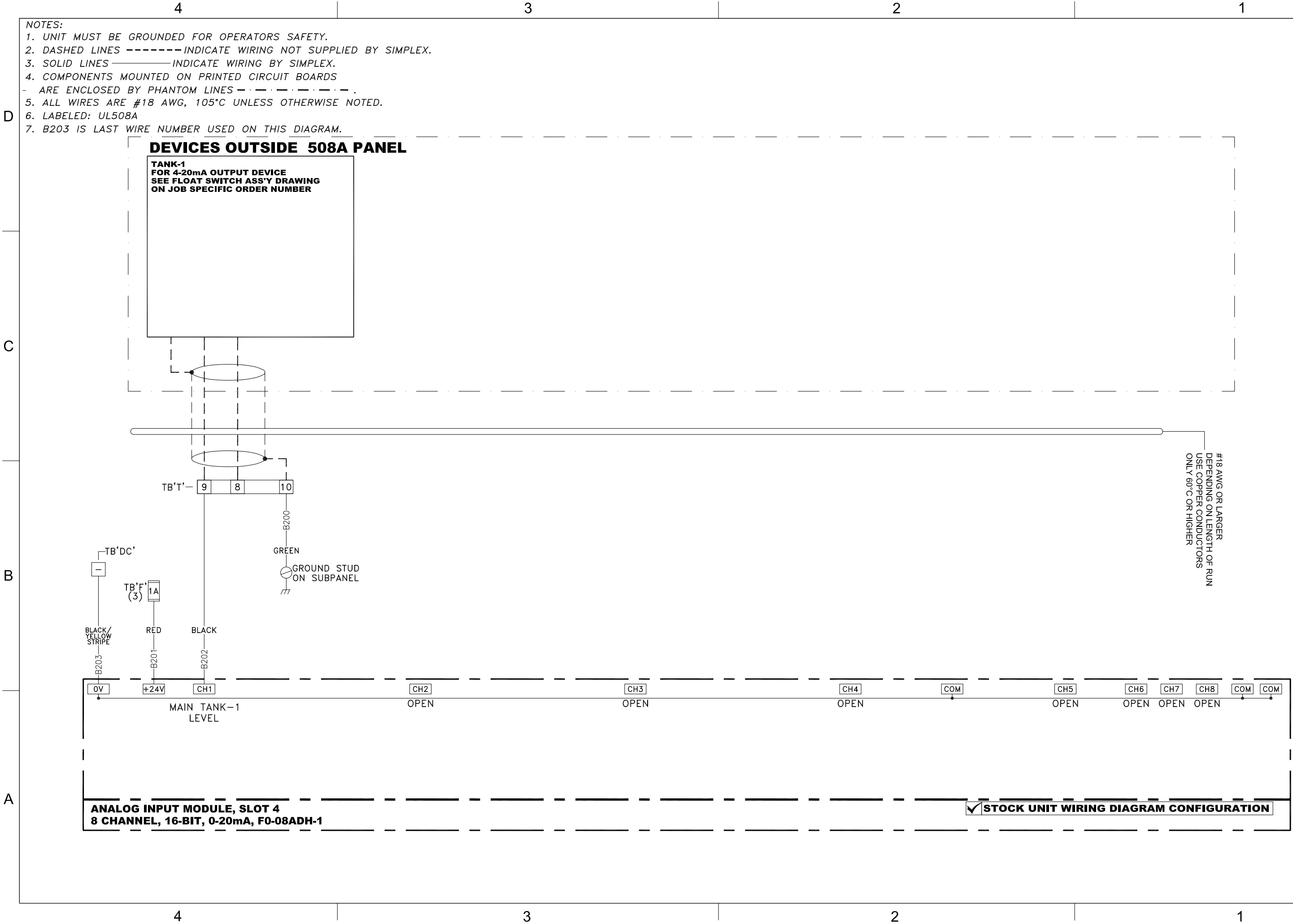




A



A



**SIMPLEX**  
SIMPLEX, INC.  
5300 RISING MOON ROAD  
SPRINGFIELD, ILLINOIS 62711-6228

THE INFORMATION HEREON IS THE  
PROPERTY OF SIMPLEX, INC., AND/OR  
ITS SUBSIDIARIES. WITHOUT WRITTEN  
PERMISSION ANY COPYING,  
TRANSMITTAL TO OTHERS AND USE  
EXCEPT THAT FOR WHICH IT IS  
LOANED IS PROHIBITED.  
© 2019 SIMPLEX, INC.  
ALL RIGHTS RESERVED

THIRD ANGLE PROJECTION

REVISIONS & UPDATES

AA	AA	INT	APPR
AA			

ORIGINAL DESIGN	DESCRIPTION

02/19/2019	DATE

A	REV

TOLERANCES  
X.XXX ± 0.005"  
X.XX ± 0.010"  
X.X ± 0.020"  
FRACTIONAL ± 1/32"  
ANGLES ± 1°  
SURFACES 125

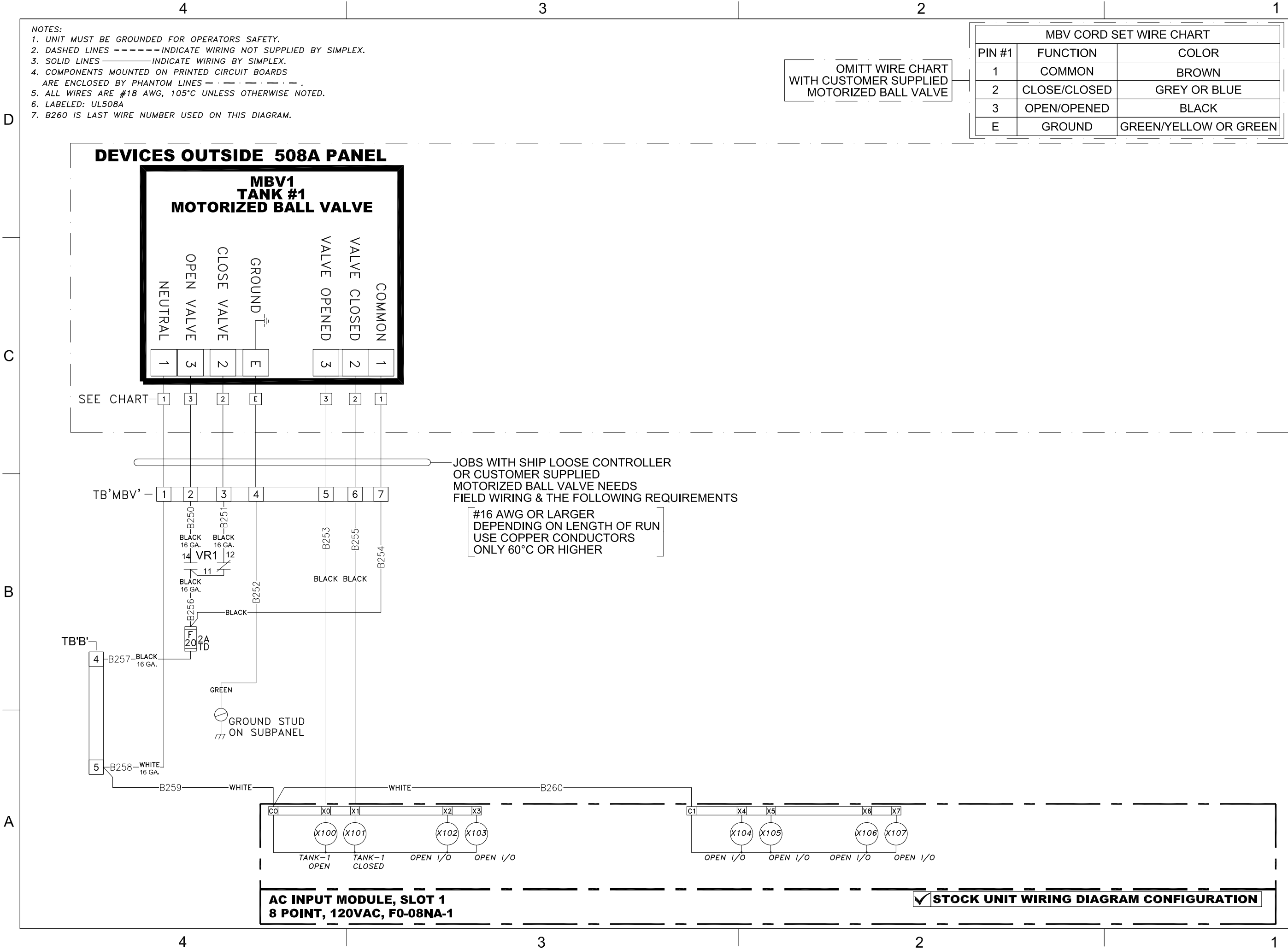
APPROVED BY: AA  
DRAWN BY: AA  
SCALE: 1:1.8634  
SHEET SIZE: ANSI B  
JOB NUMBER NA  
DESCRIPTION  
AUTOMATIC FILL CONTROLLER  
STOCK 1-TANK (PN. 50001628)  
WIRING DIAGRAM 3

Approved 02/19/2019

DRAWING NUMBER  
ACD-00053025

SHEET NUMBER  
1/1

REVISION  
A



**SIMPLEX**  
SIMPLEX, INC.  
5300 RISING MOON ROAD  
SPRINGFIELD, ILLINOIS 62711-6228

THE INFORMATION HEREON IS THE  
PROPERTY OF SIMPLEX, INC., AND/OR  
ITS SUBSIDIARIES. WITHOUT WRITTEN  
PERMISSION ANY COPYING,  
TRANSMITTAL TO OTHERS AND USE  
EXCEPT THAT FOR WHICH IT IS  
LOANED IS PROHIBITED.  
© 2019 SIMPLEX, INC.  
ALL RIGHTS RESERVED

THIRD ANGLE PROJECTION

REVISIONS & UPDATES

REV	DATE	DESCRIPTION
B	11/22/2019	ADDED NOTE FOR CUSTOMER SUPPLIED MBVS
A	02/19/2019	ORIGINAL DESIGN

TOLERANCES

X.XXX ± 0.005"  
X.XX ± 0.010"  
X.X ± 0.020"  
FRACTIONAL ± 1/32"  
ANGLES ± 1°  
SURFACES 125

APPROVED BY:

AA

DRAWN BY:

AA

SCALE:

1:1.6859

SHEET SIZE:

ANSI B

JOB NUMBER

NA

DESCRIPTION

AUTOMATIC FILL CONTROLLER  
STOCK 1-TANK (PN. 50001628)  
WIRING DIAGRAM 4

Approved 11/22/2019

DRAWING NUMBER

ACD-00053026

SHEET NUMBER

1/1

REVISION

B



D

C

B

A

# SEQUENCE OF OPERATION

GENERAL: THE AUTO FILL CONTROLLER (AFC) CONTROLS THE TRANSFER FROM A DELIVERY TRUCK TO THE MAIN STORAGE TANK(S).

OPERATION: TO BEGIN, THE "POWER" TOGGLE SWITCH MUST BE IN THE "ON" POSITION. SELECT THE APPROPRIATE TANK FROM THE HMI. THE SELECTED TANK'S DETAIL SCREEN WILL APPEAR, PROVIDING THE FOLLOWING CURRENT TANK STATUS AND FILL CONTROLS.

- CURRENTLY SELECTED TANK'S STATUS
- "FILL START" HMI SOFT-KEY
- "FILL STOP" HMI SOFT KEY
- TANK'S VALVE STATUS
- CURRENTLY SELECTED TANK'S LEVEL IN PERCENT AND GALLONS/LITERS

THE FILLING PROCESS CAN BE STOPPED AT ANY TIME BY PRESSING THE "FILL STOP" OPTION ON THE DISPLAY. AS THE TANK FILLS, THE TANK LEVEL IS CONTINUOUSLY UPDATED AND DISPLAYED ON THE HMI. ONCE THE TANK REACHES THE "FULL" LEVEL (TYP. 90%), THE ALARM WILL SOUND TO ALERT THE DRIVER AND THE TANK VALVE WILL CLOSE. IF THE DELIVERY HOSE NEEDS TO BE DRAINED THE FILL PROCESS MAY BE STARTED AGAIN FOR 30 SECOND INCREMENTS BY PRESSING THE "OVERRIDE"<sup>(4)</sup> OPTION. IF THE TANK REACHES THE "HIGH" LEVEL (TYP. 95%) THE ALARM WILL SOUND, THE FILL VALVE WILL BE CLOSED, AND ALL FILLING OPERATIONS FOR THE SELECTED TANK WILL BE PROHIBITED. ANOTHER TANK MAY BE SELECTED FOR FILL, IF APPLICABLE.

REPEAT THE PROCESS FOR ALL TANKS IN THE SYSTEM UNTIL FILLING IS COMPLETED.<sup>(1)</sup>

ONCE FILLING IS COMPLETE, CLOSE ANY MANUAL VALVES, REMOVE TRUCK HOSE, AND REPLACE THE FILL CAP. REMOVE THE GROUNDING CABLE AND TURN THE "POWER" TOGGLE SWITCH BACK TO THE "OFF" POSITION

FULL LEVEL INDICATION: IF THE LEVEL IN THE SELECTED TANK REACHES THE FULL LEVEL (TYP. 90%) AN AUDIBLE AND VISUAL ALARM IS ACTIVATED AND THE AFC WILL CLOSE THE FILL VALVE. THE FILL VALVE MAY BE OPENED AGAIN BY PRESSING THE "OVERRIDE"<sup>(4)</sup> OPTION ON THE HMI. THE FILL VALVE WILL OPEN FOR 30 SECOND INTERVALS TO ALLOW DRAINING OF TRUCKER HOSE. THE "OVERRIDE"<sup>(4)</sup> OPTION WILL BE AVAILABLE UNTIL THE SELECTED TANK REACHES HIGH LEVEL (TYP. 95%).

HIGH LEVEL INDICATION: IF THE LEVEL IN THE SELECTED TANK REACHES THE HIGH LEVEL (TYP. 95%) AN AUDIBLE AND VISUAL ALARM IS ACTIVATED AND THE AFC WILL CLOSE THE FILL VALVE. THE FILL VALVE CANNOT BE REOPENED UNTIL THE LEVEL IN THE TANK IS BROUGHT BELOW THE HIGH LEVEL (TYP. 95%).

CRITICAL HIGH LEVEL INDICATION:<sup>(1)</sup> IF THE LEVEL IN ANY TANK REACHES THE CRITICAL HIGH LEVEL (TYP. 98%) THE AFC WILL CLOSE ALL FILL VALVES. THE FILL VALVES WILL REMAIN LOCKED OUT FROM USE UNTIL THE LEVEL IN ALL TANKS IS BROUGHT BELOW THE CRITICAL HIGH LEVEL. THIS PREVENTS AN OVERFLOW IN A NON-SELECTED TANK CAUSED BY A LEAKING OR MISALIGNED VALVE.

## NOTES:

- MULTI-TANK SYSTEMS ONLY
- OPTIONAL ADD-ON FEATURE
- TYPICAL OF ALL TANKS
- OPTION IS LABELED "HOSE DRAIN" WITH 7.00" HMI UPGRADE

3

3

3

3

MAIN TANK LOW LEVEL INDICATION:<sup>(2)</sup> IF THE LEVEL IN THE SELECTED TANK REACHES THE LOW LEVEL (TYP. 10%) AN AUDIBLE AND VISUAL ALARM IS ACTIVATED ON THE HMI.

TANK LEAK INDICATION: IF A LEAK IS DETECTED IN THE SELECTED TANK AN AUDIBLE AND VISUAL ALARM IS ACTIVATED AND THE AFC WILL CLOSE THE SELECTED TANK'S FILL VALVE. THE AFC WILL NOT OPEN THE SELECTED TANK'S FILL VALVE UNTIL THE LEAK HAS BEEN CORRECTED AND ANY SPILLAGE HAS BEEN REMOVED FROM THE TANK'S SECONDARY LEAK BASIN.

SUMP LEAK INDICATION:<sup>(2)</sup> IF A LEAK IS DETECTED IN THE SUMP AN AUDIBLE AND VISUAL ALARM IS ACTIVATED AND THE AFC WILL CLOSE ALL TANK FILL VALVE(S). THE AFC WILL NOT OPEN THE SELECTED TANK'S FILL VALVE UNTIL THE LEAK HAS BEEN CORRECTED AND ANY SPILLAGE HAS BEEN REMOVED FROM SUMP AREA.

REMOTE ANNUNCIATION: MODBUS(STANDARD) OR BACNET<sup>(2)</sup> COMMUNICATION WITH THE BUILDING MANAGEMENT SYSTEM ALLOWS REMOTE ANNUNCIATION FOR ALL STATUS AND ALARM CONDITIONS. (REFER TO DRAWING PACKET FOR PROTOCOL SPECIFICS)

NORMAL CONDITIONS: THE FOLLOWING NORMAL OPERATING CONDITIONS ARE PROVIDED:

- CONTROL POWER AVAILABLE
- MAIN TANK LEVEL IN PERCENT/GALLONS OR LITERS<sup>(3)</sup>
- MAIN TANK FILL VALVE OPEN<sup>(3)</sup>
- MAIN TANK FULL LEVEL<sup>(3)</sup>

STANDBY CONDITIONS: THE FOLLOWING STANDBY OPERATING CONDITIONS ARE PROVIDED:

- MAIN TANK FILL VALVE CLOSED<sup>(3)</sup>

ALARM CONDITIONS: ALARM CONDITIONS ARE INDICATED BY AUDIBLE AND VISUAL ALARMS ON THE AUTOMATIC FILL CONTROLLER HMI. THE VISUAL ALARM REMAINS ILLUMINATED UNTIL THE ALARM CONDITION CLEARS AND THE PANEL RESET BUTTON IS ACTIVATED. THE AUDIBLE ALARM REMAINS ON UNTIL MANUALLY RESET. THE FOLLOWING ALARMS ARE PROVIDED:

- MAIN TANK FILL VALVE ERROR<sup>(3)</sup>
- MAIN TANK HIGH LEVEL<sup>(3)</sup>
- MAIN TANK CRITICAL HIGH LEVEL<sup>(1)</sup>
- MAIN TANK LEAK<sup>(3)</sup>
- MAIN TANK LOW LEVEL<sup>(2)</sup>

2

2

2

2

1

1

1

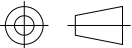
1



SIMPLEX, INC.  
5300 RISING MOON ROAD  
SPRINGFIELD, ILLINOIS 62711-6228

THE INFORMATION HEREON IS THE  
PROPERTY OF SIMPLEX, INC. AND/OR  
ITS SUBSIDIARIES. WITHOUT WRITTEN  
PERMISSION ANY COPYING,  
TRANSMITTAL TO OTHERS AND USE  
EXCEPT THAT FOR WHICH IT IS  
LOANED IS PROHIBITED.  
© 2019 SIMPLEX, INC.  
ALL RIGHTS RESERVED

## THIRD ANGLE PROJECTION



REVISIONS & UPDATES	RG	RG	RG	RG						INT	APPR
	RG	RG	RG	RG							
	UPDATED MAIN TANK LOW PERCENTAGE										
	ORIGINAL DESIGN										DESCRIPTION
07/23/2019											DATE
05/13/2019											
04/13/2019											
C	B	A									REV

TOLERANCES  
X.XXX ± 0.005"  
X.XX ± 0.010"  
X.X ± 0.020"  
FRACTIONAL ± 1/32"  
ANGLES ± 1°  
SURFACES 125

APPROVED BY:	RG
DRAWN BY:	RG
SCALE:	1:0.9884
SHEET SIZE:	ANSI B
JOB NUMBER	NA
DESCRIPTION	AUTO FILL CONTROLLER SEQUENCE OF OPERATIONS AFP

Approved 07/23/2019

## DRAWING NUMBER

ACD-00055712

SHEET NUMBER	REVISION
1/1	C

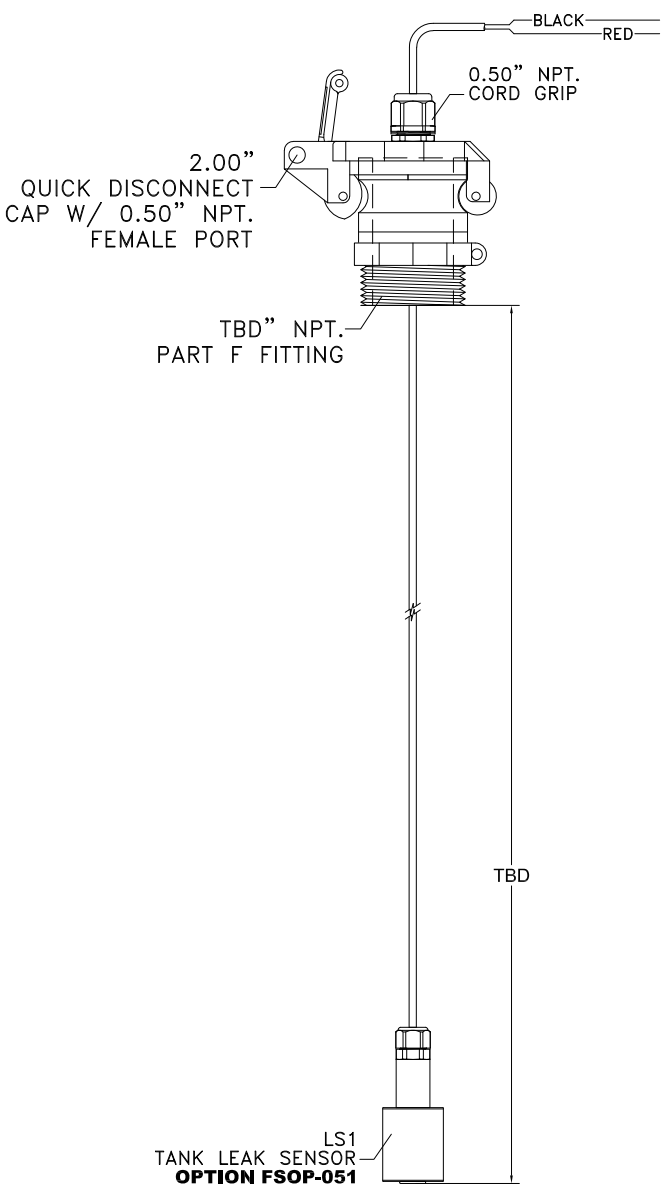
4

3

2

1

## TANK LEAK SENSOR



BASE TANKS UNDER 30" WILL REQUIRE  
(2) 2" PORTS OR (1) 4" PORT IN  
PRIMARY TANK FOR FSOP-061